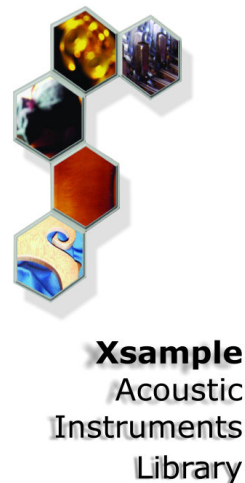


Xsample Acoustic Instruments Library

– Set up Sibelius

The Xsample Acoustic Instruments Library comes with a sound set and a house style.

To use the sound set and the house style in Sibelius, please copy the file "Xsample_AIL_Sound_Set.xml" to the following location:



Windows

Sib 7: C:\Users\yourusername\AppData\Roaming\Avid\Sibelius 7\Sounds

Sib 7.5: C:\Users\yourusername\AppData\Roaming\Avid\Sibelius 7.5\Sounds

Sib (8): C:\Users\yourusername\AppData\Roaming\Avid\Sibelius\Sounds

OS X

Sib 7: /Users/yourusername/Library/Application Support/Avid/Sibelius 7/Sounds

Sib 7.5: /Users/yourusername/Library/Application Support/Avid/Sibelius 7.5/Sounds (10.6.7+)

Sib (8): /Users/yourusername/Library/Application Support/Avid/Sibelius/Sounds (10.6.7+)

...and the file "Xsample_AIL_House_Style.lib" to the following location:

Windows

Sib 7: C:\Users\yourusername\AppData\Roaming\Avid\Sibelius 7\House Styles

Sib 7.5: C:\Users\yourusername\AppData\Roaming\Avid\Sibelius 7.5\House Styles

Sib (8): C:\Users\yourusername\AppData\Roaming\Avid\Sibelius\House Styles

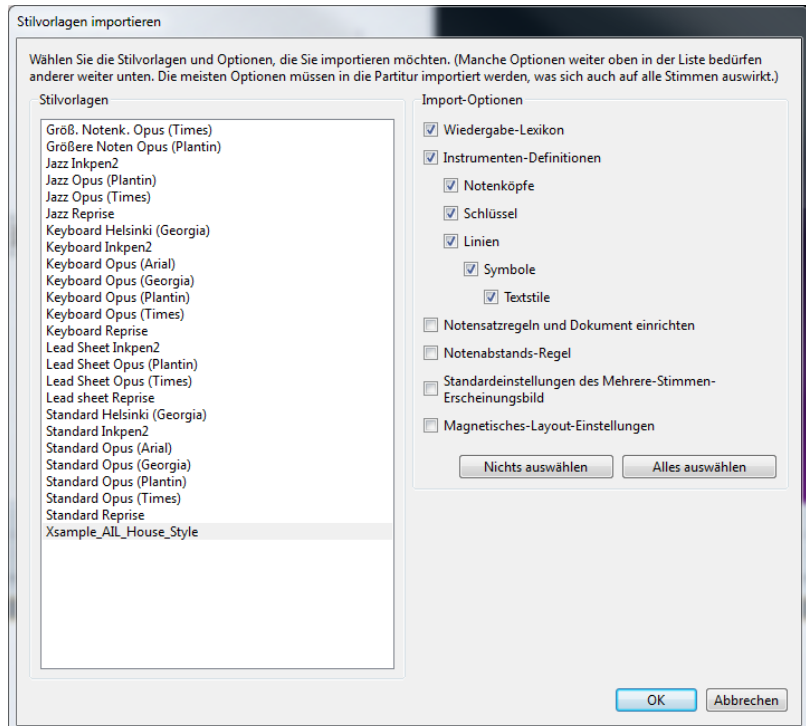
OS X

Sib 7: /Users/yourusername/Library/Application Support/Avid/Sibelius 7/House Styles

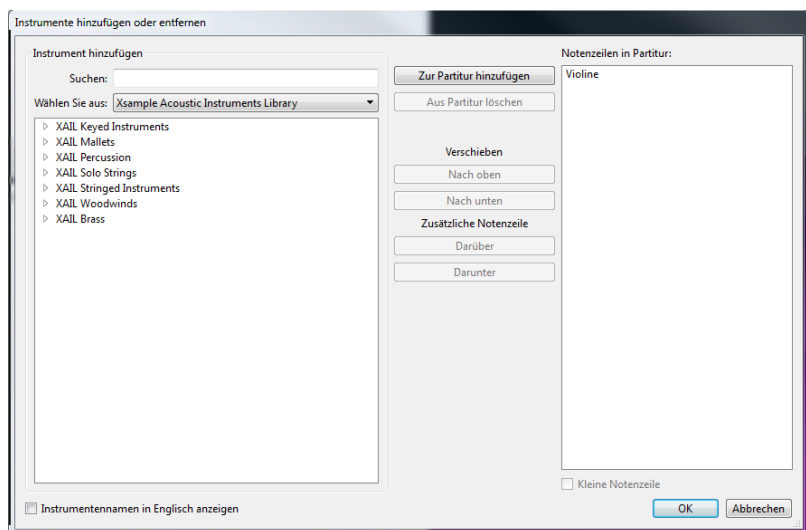
Sib 7.5: /Users/yourusername/Library/Application Support/Avid/Sibelius 7.5/House Styles (10.6.7+)

Sib (8): /Users/yourusername/Library/Application Support/Avid/Sibelius/House Styles (10.6.7+)

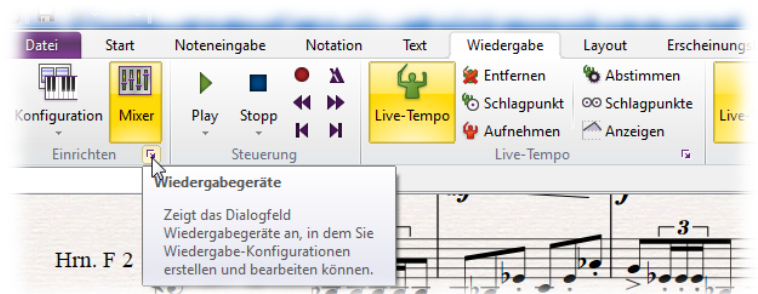
Now start Sibelius, import the Xsample house style and...



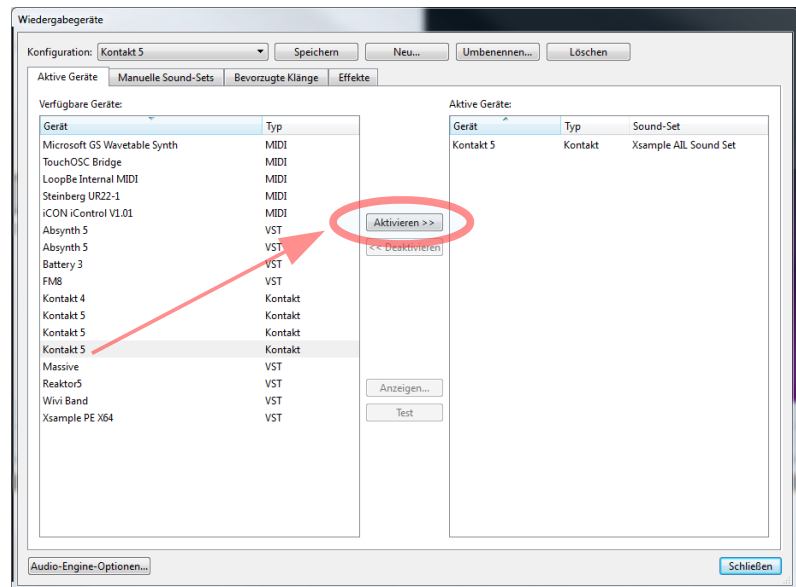
...set up a score with the instruments you want to use.



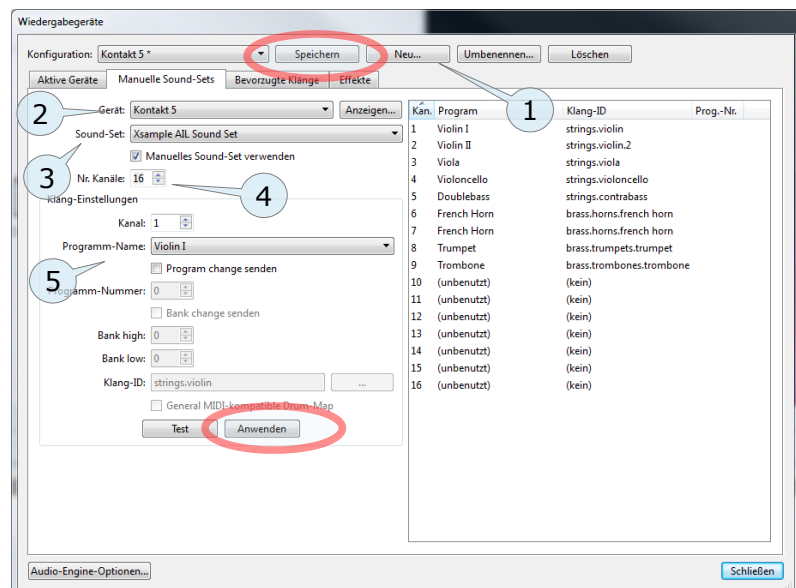
Then click on "playback devices".



Now activate one instance of "Kontakt 5".
Then go to the tab "Manual Sound Sets".



First, click on "New ..." (1) to give your configuration a name.
Then select the device (2), the sound set (3), the number of channels (4) and finally the respective program per channel (5). After the respective channel program has been selected, click "Apply". The program will then appear on the right side of the window. Now make sure to load all instruments in Kontakt to the corresponding midi channels.



When you are finished with the settings for the required instruments, save your configuration for later use.